

# THE BEST INVESTMENT IN YOUTH BEGINS WITH **ONE RELATIONSHIP**

A year of mentoring, momentum, and future readiness.



**ANNUAL REPORT 2024-2025**



**Big Brothers  
Big Sisters**  
PUGET SOUND

**MENTORSHIP** IS ONE OF THE MOST **EFFECTIVE**  
**LONG-TERM INVESTMENTS** A COMMUNITY  
CAN MAKE IN ITS **YOUNG PEOPLE.**



Become a mentor



Invest in mentorship

## TABLE OF CONTENTS

- 4** Introduction
- 6** A Message from our CEO
- 7** Who We Are
- 8** Our Service
- 9** Our Model
- 9-11** Bigs and Littles of the Year
- 12** Youth Outcomes and Results
- 13** Local Statistics
- 14** Launching Level up Tacoma
- 15** Our Growth
- 16** Financial Breakdown
- 17** Mentorship Expansion
- 18-19** Our Leadership Team
- 20-27** Our Community of Supporters



# THE BEST INVESTMENT IN YOUTH BEGINS WITH ONE RELATIONSHIP

Young people today are coming of age in a world defined by uncertainty. The path from school to adulthood is less predictable. Confidence is harder to build, and trusted guidance is not equally accessible.

At Big Brothers Big Sisters of Puget Sound, we believe one of the most effective responses to this moment is also one of the most enduring: a consistent, caring relationship with a mentor who shows up, listens, and believes in a young person's potential.

During the 2024-25 fiscal year, our work remained grounded in what has always set us apart. We support mentoring relationships that last and make a measurable difference in the lives of young people across our region.

At the same time, we continued to strengthen how we deliver impact. We supported matches with consistent professional oversight, expanded opportunities that connect mentorship to future readiness, and deepened partnerships that help young people access real experiences, networks, and pathways.

Not every young person starts from the same place. But every young person deserves access to someone who sees them, supports them, and helps them navigate what comes next. That is how potential is protected and futures are built.

**The future is built through steady relationships and shared commitment.**



# LETTER FROM THE CEO

Dear Friends and Supporters,

This past year, Big Brothers Big Sisters of Puget Sound moved with purpose, precision, and real momentum.

Across King, Pierce, Kitsap counties, we didn't just sustain our work, we advanced it. We increased the number of matches made, connecting more young people with consistent, caring mentors who show up at pivotal moments in their lives. At the same time, we significantly improved our speed to match, reducing wait times so youth can begin building meaningful relationships sooner. Faster matches mean greater access and greater impact.

We also expanded what mentorship looks like.

This year, we launched Level Up, our new group mentoring model focused on serving sixth graders at a critical transition point in their development. Middle school is a defining season, and Level Up allows us to support young people earlier, strengthening confidence, connection, and academic momentum before patterns solidify.

Our commitment to innovation continued through Bigs in Tech, where we deepen mentoring relationships while expanding exposure to technology careers, real-world skills, and future-ready opportunities. By pairing mentorship with access, we are helping young people not only believe in their potential, but see tangible pathways forward.

Behind these accomplishments is disciplined operational improvement. We strengthened how we support matches, invested in automation, and refined the systems that make mentoring safe, stable, and effective over time. Growth without quality is not our model. We are building both.

The need remains urgent. Demand for mentorship continues to exceed mentor capacity across our region. Hundreds of young people are still waiting for a caring adult mentor. That reality does not slow us it sharpens our focus. We are committed to strategic, sustainable growth that protects the integrity of each relationship while expanding access to more youth.

Our progress is powered by mentors who invest their time, donors who invest resources, corporate and community partners who invest leadership, and a team that shows up every day with heart and discipline.

This year was not simply one of activity. It was one of acceleration.

Thank you for standing with us. Because of you, more young people are connected, supported, and positioned for a stronger future. And we are just getting started.

With gratitude,



Alonda Williams



# WHO WE ARE

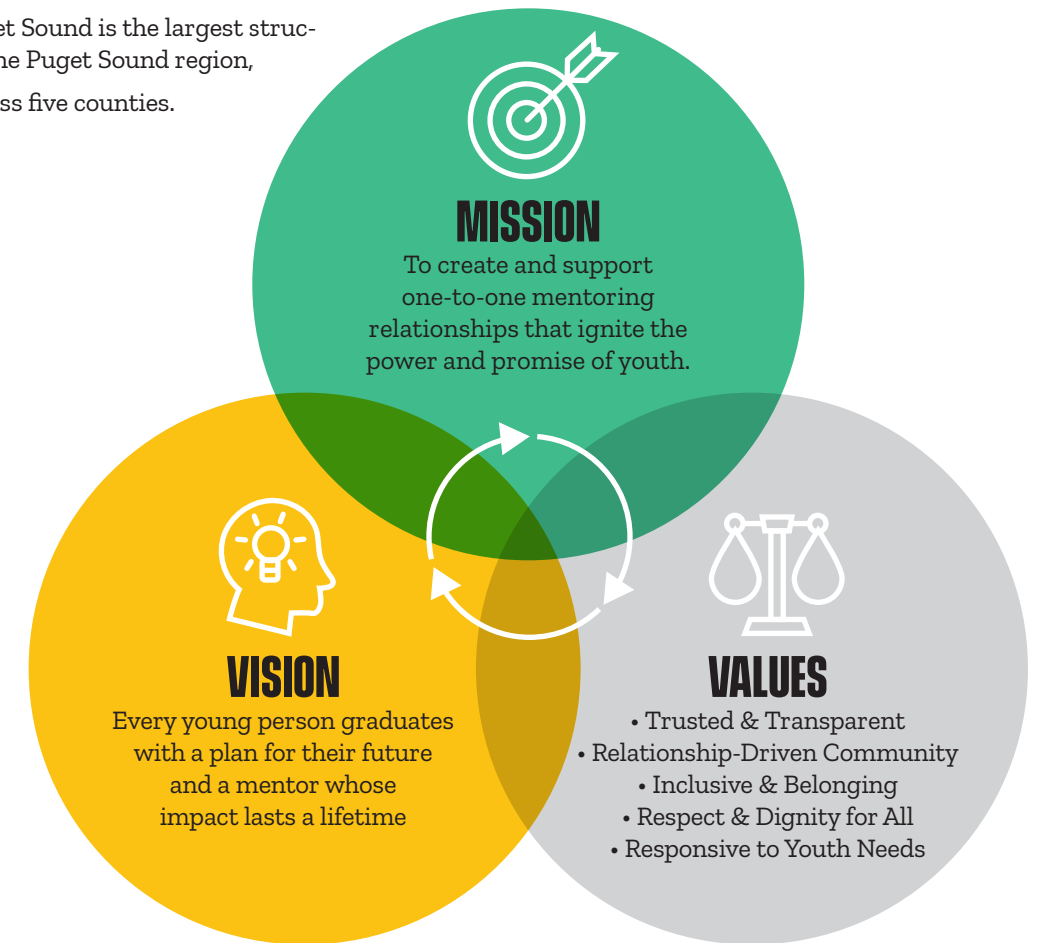
Big Brothers Big Sisters of Puget Sound exists to ensure young people have access to consistent, caring relationships that help them navigate life with confidence and purpose. For nearly 70 years, we have partnered with families, schools, and communities to support mentoring relationships that last.

Big Brothers Big Sisters of Puget Sound is the largest structured mentoring providers in the Puget Sound region, serving youth and families across five counties.

**OUR IMPACT**

**733**  
YOUTH SERVED

**714**  
ACTIVE MENTORS



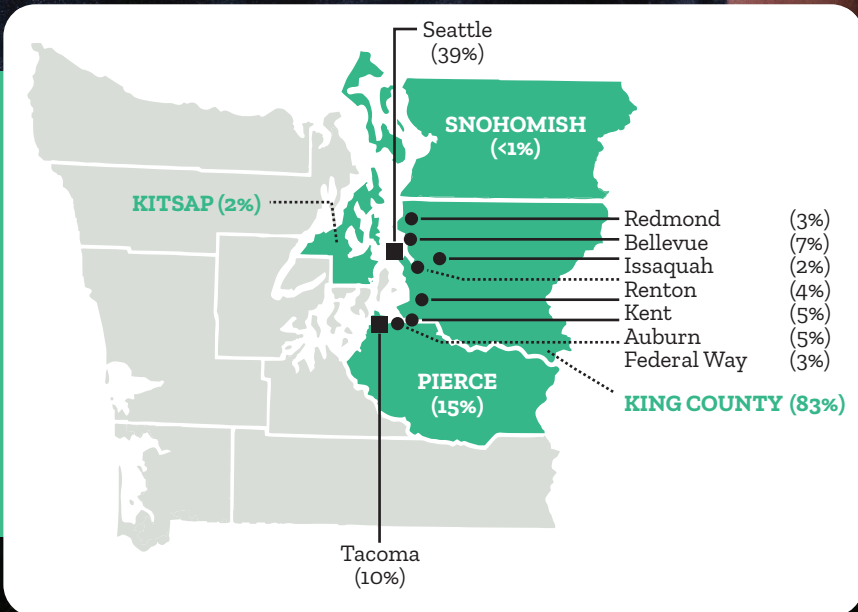
## OUR COMMITMENT TO COMMUNITY ENGAGEMENT

Community engagement is central to how Big Brothers Big Sisters of Puget Sound designs and delivers mentoring. We work closely with families, schools, and community partners while fostering strong internal collaboration to ensure mentorship is accessible, relevant, and responsive across our region.

By listening to community voices and partnering with local organizations, we reduce barriers to participation and strengthen how mentoring supports young people in their everyday environments. This same commitment to listening and collaboration shapes how we learn, grow, and work together internally, reinforcing trust, accountability,

and shared responsibility. Staying connected to the communities we serve and to one another as an organization strengthens outcomes and deepens impact. Through ongoing engagement, we continue refining our work to meet evolving needs and support young people with consistency and care.

**399**  
active  
matches

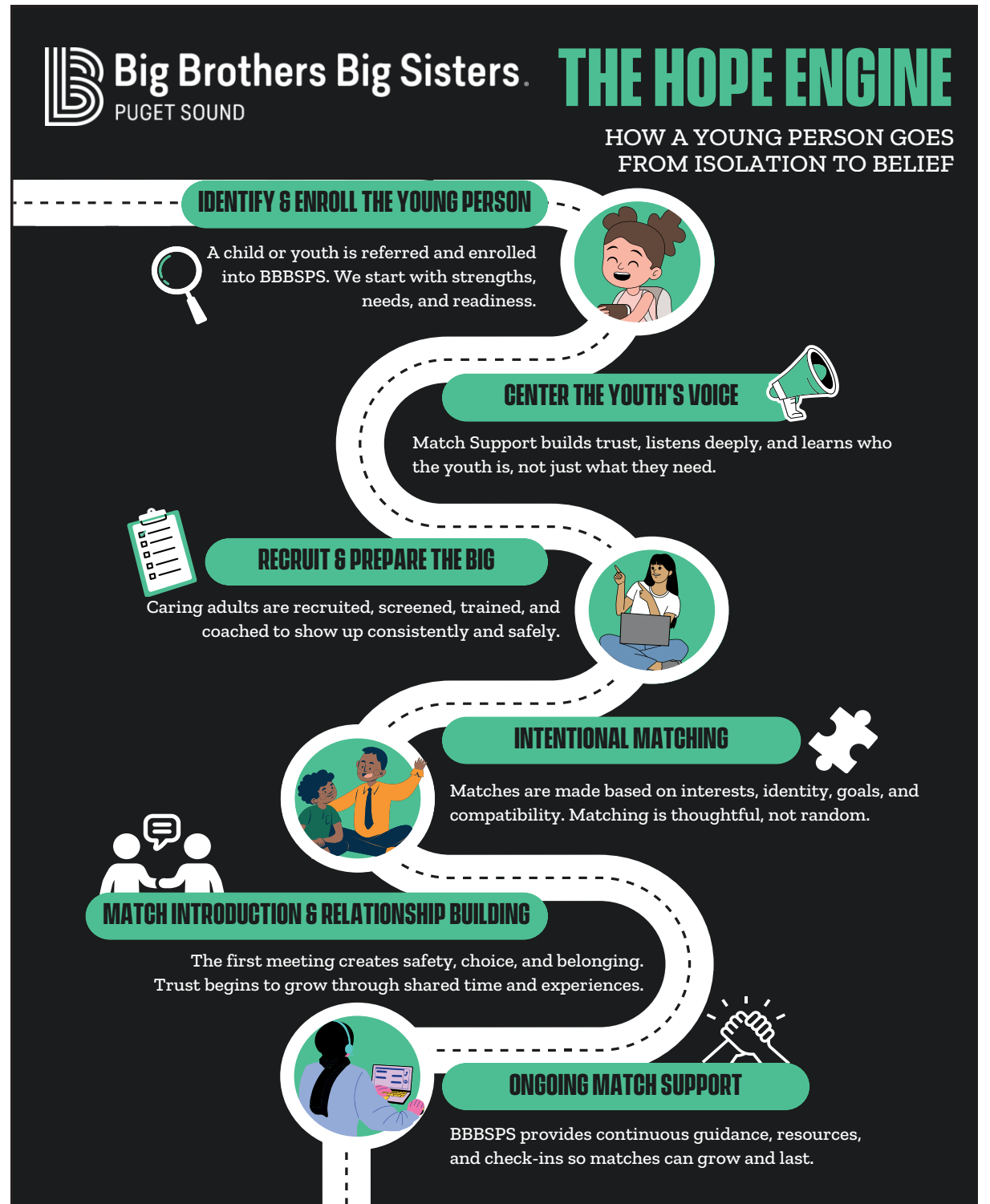


In FY 2024-2025, we served the following counties:

- King County
- Pierce County
- Kitsap County

## OUR MODEL DELIVERS RESULTS

At Big Brothers Big Sisters of Puget Sound, outcomes are built through strong relationships supported by clear structure and accountability. Our approach centers on one-to-one mentoring, reinforced by trained staff, consistent oversight, and community collaboration.



# BIGS AND LITTLES OF THE YEAR IMPACT THAT CHANGES TRAJECTORIES

Change is not created in moments alone. It is built over time through trust, consistency, and relationships that grow alongside young people. Each year, Big Brothers Big Sisters of Puget Sound recognizes Bigs and Littles of the Year whose mentoring relationships reflect the strength and impact of this work.

## BIG BENJAMIN & LITTLE JOEL



## SIX YEARS OF ENCOURAGEMENT, GROWTH, AND BIG DREAMS

What began as a shared love of basketball grew into a six-year mentoring relationship built on trust, consistency, and encouragement. From elementary school through high school, Benjamin showed up for Joel as a steady source of support, celebrating milestones, navigating challenges, and reinforcing the belief that Joel's goals were within reach.

With Benjamin's encouragement, Joel discovered a love of reading, strengthened his academic confidence, and pursued opportunities beyond high school. In 2025, Joel was accepted into multiple colleges, carrying forward not only his achievements, but the lessons learned through mentorship, including perseverance, optimism, and belief in his own potential.

---

"Earning my Little's trust and friendship over the years have given me a sense of belief in myself that I never had before."

— Benjamin, Big Brother

---

## BIG BIG RAGHAV & LITTLE GABRIEL



## FINDING BROTHERHOOD THROUGH KINDNESS AND JOY

Gabriel hoped to know what it felt like to have a brother. Raghav hoped to make a difference. Together, they built a relationship rooted in laughter, patience, and genuine care. Through shared experiences and everyday moments, their match reflects the power of simply showing up and being present.

Raghav's mentorship helped Gabriel grow in confidence and feel supported, while Gabriel's generosity and joy continue to inspire his Big. Their story is a reminder that mentorship does not require grand gestures. Often, the greatest impact comes from consistency, kindness, and belief.

---

"He is funny, calm, kind, and generous. I used to not be patient at all, and he taught me how to be patient."

— Gabriel, Little Brother

---

# BIGS AND LITTLES OF THE YEAR

## BIG MIKE & LITTLE MUSTAPHA



## FROM CAREER EXPLORATION TO LIFELONG CONFIDENCE

Matched through our Bigs in Tech program, Mike and Mustapha's relationship quickly grew beyond career exploration into a meaningful friendship grounded in trust and encouragement. Whether attending Seahawks games or tackling hands-on challenges together, their time spent side by side strengthened both confidence and connection.

For Mustapha, Mike became a mentor who modeled perseverance and self-belief. For Mike, Mustapha's curiosity and kindness brought new perspective and inspiration. Their match highlights how mentorship opens doors, not only to opportunity, but to confidence, belonging, and lasting impact.

---

"My journey with Mustapha has taught me more than I could have ever given. To future Bigs, I cannot stress enough the power of consistent presence. Each meeting strengthens our bond, building trust that deepens our connection."

— Mike, Big Brother

---

## BIG ALEX & LITTLE OLIVIA



## CREATIVITY, CONFIDENCE, AND BEING YOURSELF

When Alex and Olivia first met, both were shy and uncertain. Through shared interests in music, creativity, and storytelling, they found common ground and built trust at their own pace. Over time, their relationship became a space where curiosity and self-expression were encouraged.

Through mentorship, Olivia gained confidence in being herself, while Alex witnessed the power of creating a safe, supportive space for growth. Their story reflects how mentorship can nurture authenticity and remind young people that they are valued exactly as they are.

---

"Alex makes me feel comfortable being myself. We both like music. It's nice knowing someone is there who believes in you."

— Olivia, Little Sister

---

# YOUTH OUTCOMES AND LASTING RESULTS



## MENTORSHIP WORKS, AND ITS OUTCOMES ARE MEASURABLE.

In 2025, Big Brothers Big Sisters of Puget Sound served 733 young people across community-based and site-based programs. Among youth who completed 12 months in a community-based match, measurable gains were reported across academic performance and school engagement indicators.

### AFTER ONE YEAR OF SUSTAINED MENTORSHIP:

#### MENTORSHIP WORKS — AND THE IMPACT IS MEASURABLE.

The results on the next page reflect structured, consistent mentoring relationships supported by professional match oversight. As young people grow, our model evolves with them, reinforcing stability, accountability, and long-term progress.

Mentorship strengthens educational engagement, supports positive decision-making, and builds the confidence necessary for future workforce readiness. For communities and those who invest in young people, structured mentorship delivers measurable results over time.

Source: BBBSPS Youth Outcomes Survey (YOS), Calendar Year 2025; Internal program data.

# MENTORSHIP DELIVERS MEASURABLE RETURNS

## LOCAL STATS

### IMPACT SNAPSHOT

#### STRONGER EMOTIONAL WELLBEING

**86%** 

of youth improved or maintained healthy emotion regulation


**88%** 

of youth demonstrated strong educational expectations


**83%** 

of youth improved or maintained lower depressive symptoms

#### PROVEN SCHOOL ENGAGEMENT


**85%** of youth improved or maintained strong academic performance 

#### STRONGER RELATIONSHIPS & SOCIAL SKILLS

**78%**  of youth improved or maintained family connectedness

**90%**  of youth improved or maintained social competence

#### POSITIVE SCHOOL BEHAVIOR

**84%** of youth improved or maintained school disciplinary incidents 

# LAUNCHING LEVEL UP

## EXPANDING ACCESS AT A CRITICAL MOMENT

During 2024–2025, Big Brothers Big Sisters of Puget Sound launched Level Up, a school based mentoring model designed to reach young people during the transition to middle school. Piloted at Baker Middle School in partnership with Tacoma Public Schools, the program expanded access to consistent adult support for sixth grade students at a pivotal moment.

Level Up embeds trained, paid mentors into the school day, where they build trusting relationships outside the academic routine while staying closely connected to school staff and families. The model complements traditional one to one mentoring by increasing reach in settings where demand exceeds volunteer availability.

Early indicators from the pilot year show positive trends in student engagement, behavior, and overall school experience. Level Up reflects BBBSPS's commitment to expanding access in ways that are responsive, scalable, and grounded in strong relationships.

---

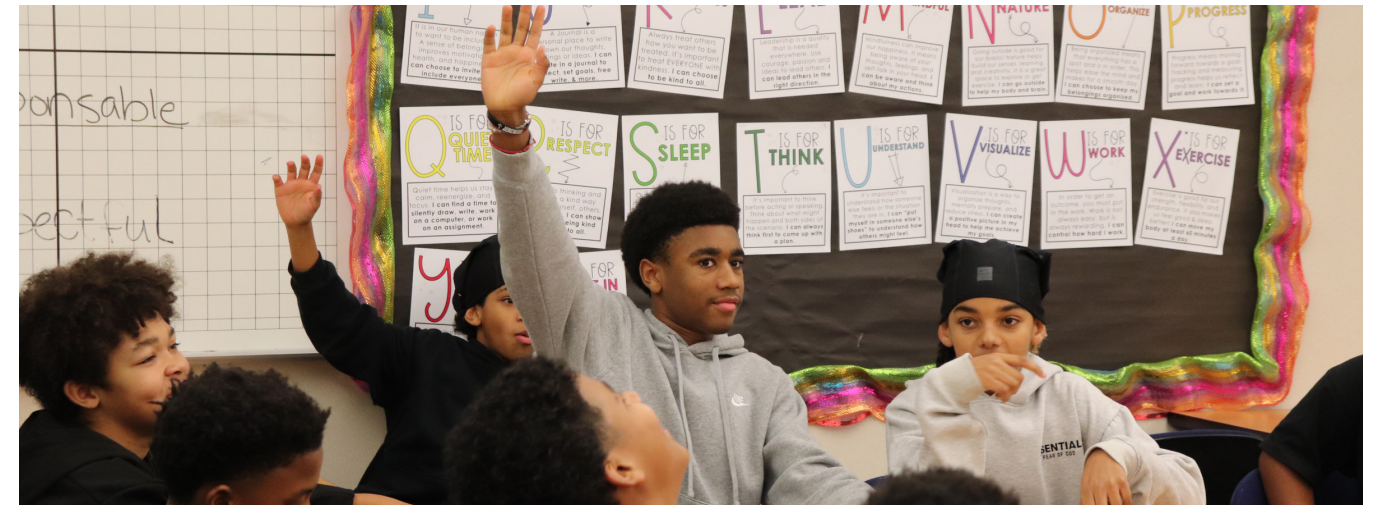
"My mentor teaches me social skills, and we have so much in common. My smart goal was to go from a D- to a C-. With that happening, what actually happened was when I went from a C- to an A-. He helped me with my goal. That's why I love Level Up."

- a Level Up participant

---



# GROWTH IN ACTION



## EXPANDING ACCESS. PROTECTING QUALITY. BUILDING WHAT'S NEXT.

During 2024–2025, Big Brothers Big Sisters of Puget Sound expanded access to mentoring while strengthening the systems that support safe, consistent relationships. Across King, Pierce, and Kitsap counties, we increased opportunities for young people to connect with caring adults, improved enrollment efficiency, and strengthened the infrastructure that allows mentoring relationships to last.

### EXPANDING MENTORSHIP ACCESS

This year, we expanded access through both community based and school based models, reaching more young people in the places they already learn and live. By improving readiness and matching processes, more youth were able to begin mentoring relationships sooner, with staff support in place from the start.

### STRENGTHENING FUTURE READINESS

We continued connecting mentorship to real world experiences that help young people build confidence and direction for what comes after high school. Programs that pair relationships with exposure to careers, skills, and new environments helped youth expand perspective and see pathways forward.

## INVESTING IN THE SYSTEMS BEHIND RELATIONSHIPS

Behind every strong match is consistent support. During 2024–2025, we strengthened operational systems that reduce administrative burden and improve service delivery. This included investments in automation and responsible AI tools to streamline enrollment tasks, support staff efficiency, and increase the time teams spend supporting youth and mentors directly.

### DEEPENING COMMUNITY PRESENCE

We deepened partnerships with schools and community organizations across our service area, strengthening local visibility and improving access for families and mentors. This work continued to build trust in King, Pierce, and Kitsap counties, while planning progressed to expand services into Snohomish County in the coming year.

### BUILDING LONGTERM SUSTAINABILITY

Sustained growth requires long term stability. This year, we strengthened cross sector partnerships and diversified support across individuals, community partners, and institutions. These efforts helped reinforce the foundation needed to continue expanding access to mentorship over time.

# FINANCIAL STEWARDSHIP AND ACCOUNTABILITY

## STATEMENT OF FINANCIAL POSITION - LIABILITIES AND NET ASSETS

For the year ended August 31, 2025

### CURRENT LIABILITIES

Accounts Payable	143,284
Deferred Revenue	248,333
Accrued Expenses and Other Liabilities	100,231
Current Lease Liability - Operating	240,706
Current Lease Liability - Finance	57,811
<b>Total Current Liabilities</b>	<b>790,365</b>

### LONG-TERM LIABILITIES

Long-Term Lease Liability - Operating	727,155
Long-Term Lease Liability - Finance	165,595
<b>Total Long-term Liabilities</b>	<b>892,750</b>

<b>Total Liabilities</b>	<b>1,683,115</b>
--------------------------	------------------

### NET ASSETS

Without Donor Restrictions:	
Undesignated	1,302,484
Board-Designated	4,876,918
With Donor Restrictions:	277,916

<b>Total Net Assets</b>	<b>6,457,318</b>
-------------------------	------------------

<b>TOTAL LIABILITIES AND NET ASSETS</b>	<b>8,140,433</b>
---	------------------

## STATEMENT OF FINANCIAL POSITION - ASSETS

For the year ended August 31, 2025

### CURRENT ASSETS

Cash	459,034
Investment, Short-term	1,517,992
Pledges and Grants Receivable, Net of Allowance	657,642
Prepaid Expenses, Inventory, and Other Assets	347,578
<b>Total Current Assets</b>	<b>2,982,246</b>

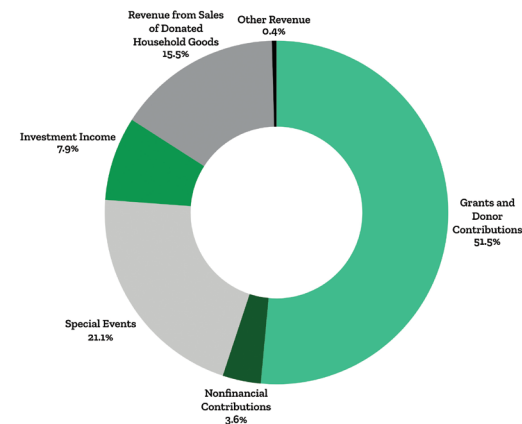
### OTHER ASSETS

Investments, Long-Term	3,358,926
Pledges and Grants Receivable, Net of Allowance and Current Portion	80,000
Property and Equipment, Net	636,410
Right of use Asset - Operating	866,199
Right of use Asset - Finance	216,652
<b>Total Other Assets</b>	<b>5,158,187</b>

<b>TOTAL ASSETS</b>	<b>8,140,433</b>
---------------------	------------------

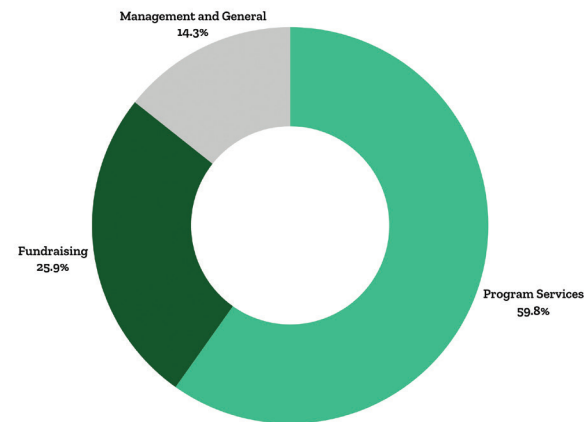
## SUPPORT AND REVENUE

Grants and Donor Contributions	2,581,006
Nonfinancial Contributions	180,323
Special Events	1,058,631
Investment Income	396,494
Revenue from Sales of Donated Household Goods	777,263
Other Revenue	21,421
Loss on Disposal of Property and Equipment	(\$2,065)
<b>TOTAL SUPPORT AND REVENUE</b>	<b>5,013,073</b>



## EXPENSES

Program Services	2,872,561
Fundraising	1,241,420
Management and General	687,940
<b>TOTAL EXPENSES</b>	<b>4,801,921</b>



# MENTORS AND VOLUNTEERS: THE IMPACT MULTIPLIER



## WHAT IT TAKES TO SUPPORT ONE RELATIONSHIP

Strong mentoring relationships are supported by trained staff, clear processes, and ongoing accountability. Behind every match are systems that ensure safety, consistency, and support throughout the life of the relationship.

[TO LEARN MORE, VISIT INPSIREBIG.ORG/ABOUT-US](https://inpsirebig.org/about-us)

# THANK YOU FOR INVESTING IN YOUTH

*Thank you to the mentors, families, partners, donors, and community leaders who invest in young people across our region. Your commitment makes mentorship possible, strengthens futures, and expands access for youth who are waiting for support.*

## LEADERSHIP TEAM

The leadership team of Big Brothers Big Sisters of Puget Sound provides strategic direction and operational oversight to ensure the organization delivers safe, effective, and high-quality mentoring experiences for young people and families.

Together, this team guides organizational strategy, program delivery, community engagement, fundraising, and financial stewardship in service of long-term impact and sustainability.



Alonda Williams,  
President and Chief  
Executive Officer



Marsh Kellegrew,  
Chief Operations and  
Finance Officer



James Modie,  
Chief Development  
Officer



Keshona Lawrence,  
Director of Marketing  
and Communications



Jennifer Haberman,  
Director of Enrollment



Itzamara Jimenez,  
Director of Programs



Monique DuBose,  
Regional Director,  
Tacoma and Pierce  
County



Denise LeMar,  
Human Resources  
Director

# THANK YOU FOR INVESTING IN YOUTH



## BOARD OF DIRECTORS

The Board of Directors of Big Brothers Big Sisters of Puget Sound provides governance, fiduciary oversight, and strategic leadership to advance the mission and ensure long-term organizational strength.

Board members bring expertise across business, nonprofit leadership, finance, education, and community engagement. In partnership with the executive team, they uphold accountability and guide the organization in service of young people and families.

### Officers

- Chair: Peter Fonfara
- Vice Chair: Stephen McKay
- Treasurer: Kevin Conklin
- Secretary: John Quirk

### Committee Chairs

- Chair: Kevin Conklin
- Finance Committee: Stephen McKay
- Fund Development Committee: Natalie Zier
- Governance Committee: Dan Rosales
- Programs Committee: Kristen Carden

### Board Members

- J. Ofori Agboka, Jr.
- Marisa Arbanas
- Gavin Bartlett
- Phillip Bing
- Kristen Carden
- Brian Clevenger
- Sarah Cook
- Dana Ferestien
- Noah Fletcher
- Mark Ghazai
- Brian Hayden
- Tony Matta
- Bobby Moore
- Pat Ogawa
- Rich Olson
- Bryce Phillips

- Dan Rosales
- Corey Rosemond
- Shakisha Ross
- Brent Schlosstein
- Lisa Smith
- Kelly Souza
- Heather Tabler
- Natalie Zier
- Joe Zimmer

# OUR COMMUNITY OF SUPPORTERS

We are deeply grateful to the individuals, corporations, and foundations whose generosity supported Big Brothers Big Sisters of Puget Sound during the 2024–2025 year. Your partnership makes it possible to build and sustain mentoring relationships that support confidence, stability, and opportunity for young people.

Big Brothers Big Sisters of Puget Sound is grateful for the corporate partners who invested time, talent, and resources to expand access to mentorship and opportunity for young people across our region. Our FY24–25 corporate partners include organizations that supported mentoring through employee engagement, sponsorships, inkind contributions, and programmatic investment.

Vanetta Abdellatif  
LiseMarie and Brett Abegglen  
Tiana Abel  
Patrick Ackley  
Rebecca Adams  
Adesope Adeborni  
Adobe Systems Inc  
Siddhant Aggarwal  
Bailey Aggen  
David Aggerholm and Gwen Lundberg  
Betty and Peter Agnos  
London Agrawal  
Jose Aguimatang  
AHBL  
Zack AhYat  
Nakita Akil  
Antonio Akins and Nyjat Rose-Akins  
Alaska Airlines  
Alaska National Insurance Company  
Haley Albert  
John Aldaya  
Alexandria Alderman  
Michelle Aldred  
Amber Aldrich  
Jacob Alhadeff  
Bradley Allen  
Joshua Allen  
John and Shayna Alley  
Michelle and Edward Alverson  
Gina Alvino  
Amazon  
Raghav and Anusha Anantharaju  
Michael Anderson  
Julia Anderson  
Megan Anderson  
Adam Andreas  
Ashleigh Ange  
Stephanie Antonietti  
Apple  
Nick Araujo  
Pablo Araya Rojas  
Marisa Arbanas and Mike Benoit  
Miguel Arellano  
James Argento and Elvira Cruz  
Angelica Arias  
Arizona State University  
Shawn Armour  
Austin Arper  
Aleks Arteaga  
Arthur W Wittig Fund Designated Fund

Akuoko Asante  
Ascendent LLC  
David Ascherl  
Phoebe Ash  
AssuredPartners MCM  
AT&T Wireless  
Geetha Athreya  
Atlas Geosciences NW  
ATS Automation  
Stephen Attwood  
Audio Rescue LLC  
Matthew Austin  
Hannah Autrey  
Tia Avril  
John Axelson  
Behren Ayydt  
Blessing Ayemere  
James (JD) Aylward  
Annie Ayres  
Joyce Bacic  
Dustin Backlund  
Amy Bacon  
Sydney Badger  
Aadria Bagchi  
Gia Baggs  
Chi Baik  
Nicole Baker  
Bridget Baker  
Julie Baker  
Steve Baldock  
Matthew Bales  
Bamford Foundation  
Jeremy Bares  
Vikas Barevadia  
Deborah A. Barge  
Barghausen Consulting Engineers  
Maria Barinova  
Vincent Barletta  
David Barnes  
Alexander and Barrett Barnett  
Haley Barnett  
Bridget Barrett  
Francisco Barros  
Andrew Barry  
Wayne Barthule  
Gavin Bartlett  
Kelsey Batts  
Melissa Bauco  
Bryan Bauer  
Robert Paul Bauer

Ginneh Baugh  
Richard Baugh, Jr.  
Mark Baughman  
Benjamin Baxter  
Richard Baynes  
Kris Beason  
John Beaver  
Scott Beckwith  
John Bell  
Emilio Beltran  
Margaret Bendtsen  
Cyra Benedict  
Yvette Benjamin  
Rob Bennett and Jen Moses  
Lorena Bensching  
Piilani Benz  
Chanda Beppu  
Alicia Berend  
Katherine Berfield  
Karen Bergin  
Jonathon Bez  
Aditya Bhargava  
Dior and Ryan Biancofiori  
Ashley Biehl  
Jordan Bierlein  
Big Brothers Big Sisters of America  
Juliann Bildhauer  
Bill and Melinda Gates Foundation  
Phillip and Katie Bing  
Madison Bingham  
James Birchard  
Alaina Bird  
Rachael Bird  
Cameron Birge  
Bishop Fleet Foundation  
Jenifer and Chad Bitzer  
Alicia Black  
Jon Blackstone  
Leif and Jen Blades  
Julian Blake  
Jaeger Bledsoe  
Jordan Blevins  
Adam Bloom  
Bloomie's  
Kurt Boberg  
Adam Boeglin  
Boeing Company  
John Boesche  
Aubree Bogdonovich  
David and Valerie Bone

# OUR COMMUNITY OF SUPPORTERS

Jemmie Boots  
Joel Borellis  
Michael Boroden  
Dani Boudreau  
Karen Boun  
Charlotte Boutz-Connell  
Evan Bowechop  
Gleason Bowman  
David Boyd  
Rebekah Braddock  
Chad Brady  
Jamie Brander  
Howard Brantley, Jr. and Saunjah Brantley  
Charles Brass  
Andrew Braswell  
Iana Breazile  
Danielle Breining  
Mike Brewer  
Aria Brickner-Mcdonald  
Bridge Industrial  
Chris Briejer  
Bryan Brittain  
Broadridge Foundation  
Adam Brooks  
Austin Brovick  
Mallory Brown  
Tameshia Brown  
Shannon Browning  
Ryan Brubach  
Toni Bruner  
Rodney and Lavonne Bryan  
Thomas Buck  
Greg Budzak and Emre Ozdemir  
Theresa Bujnoch  
Lynn Burgess  
Paige Burke  
Eric Burkholder  
Cody Burkholz  
Oname Burlingame  
Joan Burnstead  
Cliff Burrows and Anna White  
Michael Burton  
Karl Burtram  
William Bush  
Arch Butler  
Byrd Barr Place  
Ayda Cader  
Miranda Cady  
Shawn Cahill  
Eleanor Maggie Cain  
Cairncross & Hempelmann  
Caitlyn Cecchetto  
Eric and Heather Camm  
Matthew Cammarano  
Nicole and Brian Camp  
Geoffrey Campbell  
Harriet Campbell  
Lauren Candelaria  
Ross Canfield  
Rick and Jamie Cantu  
Casimera Cantu  
Sydney Caplinger  
Todd and Dianne Caraway

Maria and Patrick Carbullido  
Kristen and Todd Carden  
Allison Cargill  
Darren Carlsen  
Edward Carlson  
Justin Carlucci  
Kevin Carothers  
Christopher Carr  
Evan Carrillo  
Kelline Carroll  
Blake Carscadden  
Ron and Louise Carter  
Jamie Carter  
Jim Casey  
William Casey  
Jim Caster and Kari Hammett-Caster  
Vedad Cavcic  
CBIZ Berntson Porter  
CBRE  
Mia Cervantes  
Nino Chaboshvili  
Gurmeet Chadha  
Michele Chaffee  
Ryan Chamberlin  
Christa Chambers  
Khushboo Chandrachud  
Kelly Chapel  
Michael Chappell  
Charles Maxfield Parrish & Gloria F Parrish Foundation  
Charles Schwab  
Mike and Christy Cheever  
Chun and Joan Chen  
Vienne Chen  
Yvie Chere  
Faye Chess  
Celia Chessin-Yudin  
Linda Chew Burt  
Narindi Chhan  
Frank Chiachiere  
Chicago Title Insurance Company  
Alark Choudhary  
Priyanka Choudhury  
Phillip Christie  
Sam Chu  
Tze Chang Chua  
Krishna Chukkambotla  
David Chuljian  
Samuel Ciapanna  
Rex Ciavola  
Cisco Systems, Inc  
Grace Cisneros  
Christian Clarence  
Clark Construction Group, LLC  
Rodney Clark  
Alex Clark  
Joseph Clarke  
Bodech Clayton  
Bryttany Clayton  
Lisa Cleary  
Natalie Cleek  
Brian and Kayley Clevenger  
Annalisa Clifford Gold

Mitchell Clifton  
Darren Clingan  
Kara Cole  
Rex Collins  
Abbi Collins  
Alonzo Collins  
Confidence Foundation  
Kevin and Kristin Conklin  
Terry and Sarah Cook  
Brandan Cook  
Yoni Cooper  
Colin and Grace Corbin  
Ellisandra Cordova  
Beverly Corey  
Thomas Corey  
Danielle Corff  
Noel Cortez  
Costco Wholesale  
Andrea Courtie  
Chris Cowles  
Christopher Cox  
Derron Craft  
Elliott Crane  
Geoffrey Crawford  
Fred and Norma Crosetto  
Bruce Cross  
Patrick Crowthers  
Jeremy Croy  
Elizabeth and Rey Cruz  
Rebecca Cummins  
Brandon and Anna Curneen  
Amy Curran  
Jennifer Curtiss  
Patrick D'Amelio  
Alyssa D'Mello  
Linda Dahlstrom Anderson  
Mercedes Dalles Steffen  
Bri Daniel  
Lisa Danielson  
Sarah Danzo  
Allison Dappen  
Madhuparna Das Paul  
Eric Dashen  
Amit Datta  
Kaaren and Todd Daugherty  
Isha Dave  
Jeanette and Todd Davelaar  
Albert Davis  
Davis Property and Investment  
Griffin Day  
Kerr de Rainier  
Deacon Construction, LLC  
Ryan Deal  
Deal Investments  
Victoria and Michelle Dean  
Maxwell DeKock  
Becky and Freddie Del Prado  
Stephanie and Kevin Del Rosario  
Alexander Della  
Deloitte  
Delta Dental of Washington  
Csaba Deme  
Cole DeMeulemeester

# OUR COMMUNITY OF SUPPORTERS

Christine Deputy and Andrew Ott  
Richard Derham  
Dermody Properties Foundation  
Zach DeStefano  
Lindsey Detschman  
David Devlin-Foltz  
Adam Diamond  
Gabrielle Diaz  
Logun Dienberg  
Philip Diepenbrock  
Basil DiFrancesco  
Victoria Do  
Thao Doan  
Sharon Dobie  
Miles Dobin  
Kyrrie Dobson  
Jim Dockstader  
DocuSign- Seattle  
Brian Dodd  
Alexa Dolak  
Kristen Dong and Milo Price  
Timothy Donlan  
Dom and Lauren Dorsett  
Lindsay Dotloe  
Joe and Karlene Doupe  
Krystle Dove  
Brooke Dowling  
Robert Dowling  
Kelley Doyle  
Nora Doyle  
Adam Drake  
Leslie Dresdner  
Abraham Driggs  
Monique and James DuBose  
Nolan Duckworth  
Dan Duffek  
Ben Dulaney  
Diana Dundore  
Rylen Dunn  
Dunn Lumber  
Alex Dunne  
Jace Dwinell  
Mark Dyce  
Abby Eades  
Danica and Stacy Eakman  
Colby Easton  
Katryna Eastwood  
Toni and Bart Eaton  
Negin Ebadi  
Cole Eckerman  
Ecolab  
Aaron Edejer  
Sophia Eden  
Adam Edwards  
Michael Egan  
Ehrlich Donnan Foundation  
Cora Eifert  
Jeni Elam  
Melissa Ellis  
Jesse Elop  
Jeff Englund  
Rachel Engrissei  
Chris Enright

Keith Erdahl  
Patricia Espedal and John Sims  
Laudan and Maia Espinoza  
Yasovardhan Eswarawaka  
David Evans  
Claire Evans  
evo  
Expedia, Inc  
Expeditors  
FS, Inc  
Valerie Fairwell  
Kevin Falk  
Symone Farmer  
Steve Farrell  
Tamara Farrington-Nichols  
Andrew Faust  
Michelle and Kyle Feldman  
Dana and Megan Ferestien  
Lisa Ferguson  
Allie Ferrari  
Eric Ffitch  
Fidelity Investments Charitable Gift Fund  
Joshua Fike  
Ben Firman  
Libby Firmin  
First Industrial  
Kevin Fischer  
Alan and Lisa Fisco  
Mary Fisher  
Kevin Fitzwilson  
Danielle Flanary  
Tyson Flandreau  
Lauren Flannery  
Daniel Flaxman  
Shahar Flemmings  
Amy Fletcher  
Mason Fletcher  
Marissa Florio  
Melvin Flowers and Michele Dotson  
Kyle Fohrman  
Justin Fokkema  
Peter Fonfara and Margot Schuller  
Emily Fong  
Karen Fontaine  
Natalie Fontes  
Ron Forbes  
Rachel Forbes  
Stacy and John Fortney  
Jenny Foster  
Fox Corporation  
Frances Francia  
Tisha Frank and Moe Garcia  
Leslie Frankenberg  
Vlad Catalin Frasineanu  
Fred Meyer  
Katelyn Fredrick  
Erik Freeberg  
Stanley and Sharron Freeman  
Alex and Christine French  
Fresh Consulting, Inc.  
Fritz Friedhoff and Heidi Sachs  
Andrea Friedhoff  
Ann Friedrichsen

Larry and Margaret Fuell  
Zarah Gaeta  
TeNelle Gaines  
Janusz Gal  
Lauren Gallow  
Shachee Gandhi  
Miguel Garcia De Los Santos  
Eve Garcia-Torbensen  
Gretchen Gardner  
William Garling  
Giulian Garruba  
Carrie Gartside  
Micah Gelfand  
Shivani Ghatge  
Mark Ghazai  
Amanuel Ghrmai  
Billy Gibbs  
Lynda Giddens  
Barbara Gilchrist  
Stuart Gill and Anne Larkin  
Marie Gill  
Allison Gillespie  
Nicholas Gillett  
Sofia and Shawn Gilman  
Beth Ginsberg and Annette Hayes  
Eli and Kari Girod  
Give Lively Foundation Inc.  
Brenna Glaser  
Sarah Glass  
Terrell Glen  
Bob Godfrey  
Michelle Goldberg and Michael Adler  
Goldman Sachs Philanthropy Fund  
Tong Gong  
Andrew Gonsalves  
Genghis Goodman  
Google  
Joyce Gorski  
Gourmondo  
GPMCH Foundation  
Alex Grabowski  
Kristine Grace  
Katy Grainger  
Prexa and David Graves  
Johnnie Grayson  
Jordan Green  
Green Lake Orthodontics  
Jeremy Greer  
Cody Greiman  
Jan Griffith  
Sheila Griffiths  
Mauro Grijalva  
Alysa Grimes  
Leon Grunberg  
Gucci Corporate  
Mike Julian Guevarra  
Yash Gupta  
Karisa Gurtiza  
Victoria Gutierrez  
Matthew Guzman  
Patricia Guzman  
Heidi Treider and Peter Ha  
Mrs. Jennifer Haberman and Mr. Allan York

# OUR COMMUNITY OF SUPPORTERS

Cathy and David Habib  
Adrienne Hagberg  
Haggen Food & Pharmacy | Haggen Foundation  
Janet Hahn  
Luetenner Hale  
Orvar Halldorsson  
Mark Haller  
Robert Hallwood  
Heath Hamblen  
Melissa Han  
Brent Handy  
Tanya and Thomas Hannah  
Meaghan Hannes  
Ebo Hanning  
Niels Hanson  
Janelle Harding  
Jeremy Hare  
Annette Hargett  
Erin Harlington  
Dee Ann Harn  
Calvin and Charlene Harris  
Chloe Harris  
Anthony Harrison  
Paul Hart  
Michael Hartmann  
Mike Hartmann  
Justin Hartwig  
Lauryn Harvey  
Sheena Hathorn  
Madison Hattaway  
Larisa Hauser  
Aine Hawthorn  
Brian and Michelle Hayden  
Margaret Hayes and Rahul Thombre  
Micah Hayes  
Michael and Dallas Haynes  
Patricia Hayward  
Zachary Hegemann  
Tara and Jeffrey Heimans  
Lorelei and Don Heisler  
Patricia Helgren  
Lucy Helm  
Joan Hemphill  
Gretchen and Sean Henderson  
Jon Hendrix  
Heritage Bank  
Jose Hernandez II  
Juan Ramon Hernandez Jimenez  
Bryan Hester  
Cameron Hewes  
Hewlett-Packard Company  
Abraham Heyman  
Amber Heyward  
Troy Hickman  
Kyle Hickman  
Jason Hicks  
Daron Hill  
Hiller Zobel Trust  
Alan Hilowitz  
Kirk Hines  
Holly Hinton  
Adam Hite  
Alfred Ho

Michelle Ho  
Clinton and Donna Hoberecht  
William Hodge  
Megan Hodge  
Scarlett Hoefler  
Michael Hoellen  
Hillary Hoffer  
Leonard Hofman  
Holland & Knight LLP  
Alex Holtzberg  
Karin Hongladarom  
Ricky Hooper  
Richard Hooper  
Jordan Hopkins  
Margaret Horger  
Jonathan Horner  
Steve and Amy Houmes  
Batrina Houston  
Brad Howeler  
Alexander Howitt  
Matt and Sam Hrdlicka  
Jamie Huang  
CJ Hughes and Andrea Duys  
Deb Huizinga  
Kathleen Hulin  
Nick and Victoria Hume  
Chad Hunter  
La Shanda Hurst  
Oliver Huskey  
Janica and Kyle Hutchinson  
Michael Hwang  
Andrea Hynes  
Dai Ichikawa  
Elisa Idal  
Ivan Idro  
Codie Ierien  
Jean Ingebritsen  
Terietta Ingram  
Inspire Brands Foundation, Inc  
Sonia Ionescu  
Pranathi Irala  
Peter Irvin  
Nick Jackal  
Reneeca Jackson  
Ryder Jacobsen  
Lynn Jacobson  
Shauny Jaine  
Maurice James  
Laura Jarrell  
Johnnie Jasper  
Tyler Jaszkwowiak  
Donna Jerns  
Joseph Jesse  
Steven Jewett  
Belinda Jiang  
Hannah Jilek  
Kayvia and Lacey Jimerson  
Ajay and Ivana Jindal  
Peter Johndrow  
Clay Johnson  
Dailyn Johnson  
Kari Johnston  
Christopher Jones and Jeanine Benham-Jones

Johnny Jones  
Crystal Jones  
Levon Jones  
Jones Lang LaSalle - JLL  
Kaela Jonson-Smith  
Kae Jonson-Smith  
Curtis Jordan  
Eric Jorgenson  
Karen Jost  
Daniel Joyce  
JPC Architects  
Kalila Kabor  
Heather Kaiserani  
Anna Kakos  
Suman Kamath  
Daniel Kamm  
Tyler Kang  
Gitanjali Kannan  
Alhagi Kebba Kanyi  
Dan Kaplan and Preeyel Dalal  
Vivika Kapoor  
Cassandra Karch  
Andrea Kares and Chris Wright  
Karr Tuttle Campbell  
Michael Kaser  
Athena Kashin  
Kait Kassube  
KBC Advisors  
Melissa and Peter Kearney  
Laura Keene  
Melanie Keisor  
Marcie and Mr. Marsh Kellegrew  
Joe and Jenna Kelley  
Lindsay Kelley  
Pat Kelly  
Kelly-Thomas, Inc.  
Kelly and Hans Kemp  
Christopher Kennedy  
Jolynn Kenney  
Julie Kent  
Baxter Kent  
Brian and Donna Kerr  
Amy Kerr-Brown  
Jill Kesinger  
Yash Sumant Ketkar  
Nehemiah Key  
KeyBank  
KeyBank Foundation  
KG Investment Properties  
Thear Khun  
Thomas Kiene  
Kristen Kincanon  
John Kindt  
King County Employee Giving Program  
Kevin King  
Lisa Kinlow  
Kirby Electric, Inc.  
Connor Kirsch  
Vignesh Kirubakaran  
Kay Kitamura  
Randy Klein  
Jennifer Klein  
Larry Knapp

# OUR COMMUNITY OF SUPPORTERS

Jim Kniest  
Diana Knight  
Adam Knight  
Staci and Noah Knight  
Joe Knipp  
Laura Knudsen  
Ted Kohler  
Kathryn Koos  
Beall Korry  
Stacie Koslovsky  
Drew Kossen  
KPMG LLP  
Alexis Krell  
Galya and Blake Kristine  
BJ and Liz Kuula  
Siddharth Lal  
Greg and Jenifer Lambert  
Dr. John Lang  
Dyana Langley-Robinson  
Madisson Lank  
Ethylanne Larrimore  
Sharon J Larson  
Collen Larson  
Brooks Laselle  
Zach Laster-Hazzard  
Christy Laufman  
Keshona Lawrence and Monika Thornton  
Hayley Lawrence  
Michelle Lazarov  
Emily Lazovik  
LBA Realty  
Tiffany Le  
Mary and Greg Leach  
Kenard Leach  
Jessica Leafmeeker  
John Lee  
Justin Lee  
Deborah Lee-Ludwig  
Gregory Leiman  
Ryan Leitner  
Jenny Leland  
Noah Lerner  
Brandon Leslie  
Aldrinana Leung  
Cynthia Lewis Harris  
Charles Lewis  
Kirstin Leyh  
Xiaotong Li  
Kevin Li  
Jade Liao  
Liberty Mutual  
Dawn Liburd  
Lars Liden and Jennifer Soderberg  
Benjamin Lile  
Jennifer Lilly  
Vivian Lim  
Yashaswinee Limaye  
Rachel Lin  
Anne and Larry Lincoln  
Aaron Lindstrom  
Lisa Caldwell  
Corey Little  
Kit Liu

Andrew and Laura Livingston  
Eric Lo  
Michelle Locke  
Lockton Companies  
Rani Lofstrom  
Dylan Logan  
Spencer Logan  
Aliyah Logan-Kelly  
Darron Long  
John and Heather Lorge  
Maiya Loucks  
Alyssa Louie  
Tanise and Derrick Love  
Steve and Sabrina Lozano  
Lauren Lozano Vogt and John Vogt  
Alan Luan  
Alexandre Lucille  
Dawn Lucrisia-Johnson  
Emma Lukin  
Hillary Lundberg  
Anthony Lundberg  
Peter Lutovsky  
Cindy Lykins  
Mary Lyle  
Joyce Lynn  
Kris Lysaker  
J M  
Robert MacAulay and Keri Ellison  
Devon Macey  
Macfarlane Homes  
Victor Maciel  
Nick Macsanders  
Alexis Madzelonka  
Megan Maerz  
Jon Magin  
Michael and Michelle Maher  
Sharif Mahfouz  
Elizabeth Mai  
Derek Majewski  
Justin Mak  
Jorge Malagon Baeza  
Jane and Joe Maly  
Lia and John Mancuso  
Margo and Mike Mansfield  
Shireen Mansoori  
Joanna Mantello  
Tony Manzanaras  
Eric Manzanarez  
Patricia Marcus and Richard Berley  
Lisa Marie  
Michelle Marshall  
Jennifer Martin  
Aimee Martini  
Andrew Marzano  
Catharine Mason  
Yolonda Massey  
Lorenzo Mata and Spencer Vancleeve  
Antonios Matakos  
Michele Matassa Flores  
GS Matencio  
Tana Matera  
Amit Mathradas  
Tony Matta

Keith and Natalie Matthews  
Urel Mattis  
Timothy Mattson  
Nicole and Adam Matzinger  
Mark Mauger  
Amy Mauldin  
Mark McAlexander  
Kyle McBarron  
Kelsie McCall  
David McCallum  
Lucas McClish  
Kevin McCuistion  
Conor and Dominique McDonald  
Robb McEachran  
Marcus McElroy  
Ian McEniry  
Meghan McFarland  
Erin McHugh Saif  
Colin McIllece  
Sharon McIlvain  
Bonnie McInnis  
Catherine McIntyre  
Stephen and Megan McKay  
Melba McKay  
Sean McKeague  
Mark McKelvey  
Heath McLellan  
Ally McLoughlin  
Parisa McPhee  
Julissa McWashington  
Spencer Mead  
Robin and Craig Medin  
Gary Melonson  
Dennis Melton  
Carrie Mendoza  
Mattie Mercado  
Alex Merick  
Mimi Merliss  
Henry Mermel  
Sonali Merrill  
Brittney Merriman  
Ben Mertens  
Nikhil Meshram  
Molly and Jason Mesnick  
Amit Mhatre  
Paul Michael  
Nathan Micklos  
Microsoft  
MightyCause  
Jay Miguel  
Kai Mihata  
Mike Tice Foundation  
James Mikhailenko  
Nikita Milani  
Yvonne Miller  
Alex Minavi  
Roland Mitchell  
Merissa Mitchell  
Saket Modi  
James and Kristen Modie  
Erik Moe  
Karen Moffett  
Elham Mohammed

# OUR COMMUNITY OF SUPPORTERS

Nyanthri Mohanram  
Ryan Molden  
John and Lisa Monahan  
Gloribel Mondragon  
Kenneth Moninski  
Beth and Chris Montag-Schmaltz  
Catherine Moonan  
Bobby and Octavia Moore  
William Moran  
Morgan Stanley Global Impact Funding Trust  
Cindy Moriarty  
Ryosuke Morii  
Anne and Gerard Morisseau  
Tim Morris  
Allie Morris  
Aubrey Morris  
Bill Moseley  
Daniel Moser  
William Moultrie  
Jaclyn Moy  
Michelle Moyer  
Muckleshoot Casino  
Catherine Mueller  
Patty Muir  
Jason Mumme  
Bethany Munch  
Debora and Allan Munguia  
Sarah Murphree  
Ed Murphy  
Sam Murray  
Dennis Muse  
Taylor Muzatko  
Karen Myers  
Mats Myrberg  
Vikram Nagaraj  
Dhruvin Nandola  
Daniel Narloch  
Audrey Nassal Johnson  
John Nave  
James & Susan Neff  
Neil Walter Co LLC  
Matt Neilson and Dave DeSimone  
John Neisen  
Ethan Nelson  
Joe Nelson  
Tracey Nephew  
Tema Nesoff  
Jamie Ness  
Julie and Tom Newell  
Holly Newman Dzyban  
Newmark  
Sophorn Ngeth  
Kristin and Elton Nichols  
Gwen and Kerry Nicholson  
Caila and Jess Nickerson  
Christopher Nicolaus  
Andrew Nielsen  
John Niesen  
Nike  
Dane Nimako  
Nintendo of America Inc  
Scott Nordberg  
Taylor Nordby

Nell Nordlie  
Nordstrom  
Brent Norton  
Sasha Nosecchi  
Aerin Notario  
Desherra Nwanguma  
Corey and Margaret O'Brien  
Jesse O'Dunne  
Michael and Michelle O'Grady  
Michael O'Sullivan  
Diane Oakes  
Christina Oakley  
Joshua Oberg  
Jacob Obrigewitsch  
Pam O'Connor  
James and Linda Odom  
Pat and Margie Ogawa  
Julie Olden  
Matt Olfson  
Kevin Olivier  
Amanda Olson  
Maggie Orse  
Sierra Ortega  
Mary Ellen Osthus  
Dr. Kim Otis  
Jesse and Jennifer Ottele  
Christian Ouellette  
Anthony Owusu  
Folake Oyegbola  
Alex Pace  
Carly Pacheco  
Pacific Outdoor Advertising  
Alan Packer  
Barbara Page  
Nathan and Kami Paine  
Harini Palanisamy  
Joanna Pang  
Chris and Mandy Par  
Parcion Private Wealth  
Jennifer and Heather Parda-Aldrich  
Michael Park  
Mihir Parshionikar  
Sameer Patel  
Paulen Family  
PayPal  
Kaytlyn Perin  
Perkins Coie Foundation  
Michelle Perroton and Micah Bongberg  
Nykoli Peterson  
Alexis Peterson  
Bryce Peterson  
John Petrie  
Anna Pham  
Nhat Pham  
Bryce and Elise Phillips  
Harrison Phung  
Sean Pickard  
Simone Pierre-Jerome  
Lorenzo Pisani  
Lauren Plante  
Poe Construction  
Laurel Poertner  
Naga Venkata Vamsi Krishna Polavarapu

Sean Pollock  
Steve Poplewell  
Nathan Porter  
Christian Porter  
Michael Porter  
Margot Potts  
Jean Powell  
Power Youth Foreman Foundation  
Aadithya Prakash  
Michelle Prange  
Matthew Preston  
Lisa Price  
Richard Price  
Kerry Price-Duffy and Mike Duffy  
Kelly Pritchard  
Annu Priya  
Victoria Provenzano  
Puget Sound Energy  
Puget Sound Energy Foundation  
Rob Purcell  
Brian Quarles  
Gigi Quaye  
Dennis Quinn and Joe Sanchez  
John and Lee Quirk  
Dhineshkumar Ramasubbu  
Aravind Ramesh Kumar  
Adriana Ramirez de Arellano  
Rampion Books Inc  
Shiami Ranasinghe  
Nicholas Ratzke  
Johnny Ray  
Alex Rea  
Julie Read  
Melissa Reaves  
Beereddy Pranit Reddy  
Kyle Redman  
Kelly Reed  
Allison Reed  
Karen Reichert  
Eric Reid  
Megan Reiner  
Abby Reinertsen  
Kelan Reismeier  
Ben Reiss and Valerie Madas  
Renaissance Charitable Foundation  
Anthony Reyes  
Ryan Rhodes  
Craig Rice  
Steve Rich  
Greg and Alison Richards  
Sophia Richardson  
Kristen Richmond  
Jeff Richmond  
Patty and Clay Richmond  
Dave Riendeau  
Colin Rigby  
Ashley Rindero  
David Rishwain  
Mike Ritter  
Courtney Rivera  
Mat Rocchi  
Darcy Rochelle  
Shay Rockman

# OUR COMMUNITY OF SUPPORTERS

Kim Rodgers  
Andre Rodriguez  
Yvonne Rodriguez  
Tom Rogers  
Cameron and Cynthia Rogers  
Dan Rogland  
Johanna Rogozen-Soltar  
Ann Romero  
Frank Rorie  
Dan Rosales  
Jake Roselli  
Corey and Elizabeth Rosemond  
Ian Rosenbery  
James Rosenthal  
Lonnie Rosenwald  
Shakisha and Dean Ross  
Rick and Peggy Rostan  
Adam Ruka  
Christina Russell  
John Russell  
Doug Ryan  
Daniel Sada Caraveo  
Monica Sagisi  
Peter and Lis Saladino  
Gina and Peter Salama  
Vincent Saldana  
Salesforce  
William Sallembien  
Karen Samuel  
Delilah Sanabria  
Damian Sanchez  
George Sanders  
Melvin Sanders  
Akash Sandhu  
Justin Santillan  
John Sargeant  
Chenoah Saubert  
Karen and Geoff Saunders  
Richard Scarlett and Wanda Hunt  
Corrina Schaefer  
Adam Schaeffer  
Erin Scherch  
Robin Schiro  
Claire Schlafly  
Brent Schlosstein  
Jesse Schlueter  
Matthew Schmid  
Robert Schmidt  
Melodie Schneider  
Schnitzer Investment Corp.  
Schoenfeld-Gardner Foundation  
Eric Schoettle  
Denise Schroeder  
Nalani Schumacher  
Schwab Charitable Fund  
Scott E Silver Family Foundation  
Anna Scott  
Janice Sears and Thomas Brown  
Alexis Sears  
Seattle Foundation  
Seattle Seahawks  
Seattle-Sonoran Foundation  
Emma Sedarski  
Sorelle Sedej  
Edgars Sedols  
Jasleen Sekhon  
Geneva Selwyn  
Erik and Melissa Sexton  
Amir Shahidi  
Mark Shapiro  
Adam Shapiro  
Nisheeth Sharma  
Brian Shaw  
Joshua Shearer  
Emily Shepodd  
Ben Shimizu  
Jason Shimomura  
Derek Shiu  
Jason and Marsha Shoemaker  
Osha Shukla  
Sheila Shultz  
Sheref Sidarous  
Sierra Construction Company, Inc  
Delma Silva  
Jaskaran Singh  
Manoj Singiresu  
Lorenzo Singletary  
Matthew and Christina Skally  
Brett Skaloud  
Sierra Slade  
Sheldon Slater  
Belma Slatina  
Aaron Slatton  
Kellie Sloan  
Ron Smith and Jan Griffin  
Michael Smith and Paul Schmidt II  
Anthony Smith  
Alisa Smith  
Anthony Smith  
Cindy Snyder  
Dolly Sobhani  
Sequoia Sol  
Anna Son  
Matt Son  
Justin Song  
Sophia Bell Lavini  
Nissa Sorenson  
Jim Soukup  
Danielle Souliere  
Sound Community Bank  
Ellen Southard  
Nadia Southichack  
Kelly Souza and Daniel Massare  
Rachel Spector  
Emily Spencer  
Janna Spinney  
Marc Spiotta  
Jill and Gerry Spratt  
Daniel Sreebny  
Amitesh Srivastava  
Jacque St. Romain and Isaac Conlen  
Linda St.Clair  
Broderick Stadden  
Todd Stakset  
Starbucks Coffee Company  
Roger Starkweather

Kyle Steen  
Per Johannes Steenstrup  
Spencer and Madison Steffen  
Josh Stefoglo  
Shaun Stephens  
Eric Stephens  
Christopher Sterkel  
Jeffrey Sterken  
Aubrey and Alyse Stevens  
Willie Stewart  
Stewart Title Guaranty Company  
Jordan Stiebritz  
Monica Stillwell  
Ryan Stinnett  
John Stockamp  
Stocker Foundation  
Robert Stone  
Elizabeth Stone  
Michael Storck  
Aimee Storm  
Lydia Straub  
Cole Strauss  
Chipalo Street  
Christopher Stromdahl  
Chad Strong  
Emily Strong  
Marcelo Suarez  
Kamesh Subramaniam  
Nick Sucharski  
Sean Sullivan  
Maureen Sullivan  
Trey Sullivan  
Sam Sunderland  
Grant Sutherland  
Crystal Swanson  
Amanda Swearngin  
Jessica Swets  
Kandace Sylvester  
Hunter Sylvester  
Ray Szylo and Michelle Burns  
T-Mobile  
Heather and Matt Tabler  
Bridget Talebi  
Barry Talkington  
Thanh Tan  
Timothy (Tim) Tang  
Karthik Tangirala  
Lucy Targett  
Tarragon LLC  
Michelle Taylerson  
Oliver Taylor  
Molly Tellers  
Christopher Templeton  
Randy and Jill Tennant  
Tina Tenner  
Kushagra Thapar  
Andrea Tharp  
The Hob Nob  
The Seattle Times  
Catherine Theissen  
Soniya Thekkevalappil Noormuhamed  
Steve Tholl  
Levi Thomas

# OUR COMMUNITY OF SUPPORTERS

Geoff Thomas  
Cole Thomas-Sawyer  
Anna Thomassen  
Charles Thompson  
Dawn Thompson  
Megan Thorne  
Kyle Thorpe  
Halldor Thorsteinsson  
Anthony Throop  
Jayden Thurston  
Jenny Ting  
Zachary Tingle  
Camilla Titterington  
Todd's Micron Family  
April Tomlinson  
Jonathan Tornes  
Nikki Torres  
Brandon Tower  
Cynthia Tran  
Jose Traywick  
Mallory and Gary Triplett  
John and Stephanie Trolen  
Scott Trowbridge  
Tenasha Trujillo  
Rachel Tschida  
Sara Turco  
Tracy and Evan Turman  
Kelly Tweeddale  
Twilio  
UK Online Giving Foundation  
Tressa Umali  
Peter Umino  
Umpqua Bank  
Unico Properties  
UnitedHealth Group  
US Bank Foundation  
Dean Uttech  
Aaron Valenta  
Emmanuel Valentin  
Brian Valley  
Todd and Tricia Vallie  
Laura Van Beek  
Sean Van Norman  
Monica Van Tassel  
Naelie Vancia  
Vanguard Charitable Endowment Program  
Solenne Vanne  
Jill Vanneman  
Jose Vargan  
Natalia Vasileva  
Efthymia Vasilopoulou Novelo  
Brianna Vaughn  
Desirae Vega  
Carolina Verde  
Alicia Vermaele  
Sergio and Illika Victorio Queija  
Carina and Luis Vidal  
Hans Vieser  
Tove Vinz  
Vitaes  
Voya Financial  
Rachel Wagner-Kaiser  
Toni Wahl

Steven Wainwright  
Raymond Waite  
Lee and Liz Walker  
Scott Waller  
Yanxiang Wang  
Dedrick Wang  
Freneau Wang  
Kiki Wang  
Keith Ward and Carolyn Cunningham  
Rachel Ware  
Nate Warren  
Jodi Warshaw  
Molly Wartenberg  
Andrew Wary  
Vincent Washington  
Mike Washington  
Wayne's Roofing, Inc.  
Annie Weatherly  
Cheri Webb  
Tim Weber  
Max Wechsler-Azen  
Caroline Weeks  
Kris Weidenbach  
Lexie Weil  
Michael Weilbacher  
Timothy Weir  
Herbert Weisbaum  
Wells Fargo  
Wells Fargo-Tacoma  
Emily Wells  
Ricardo Wenger and Janet Neumann  
Adi and Anat Weshler  
John West  
Morgan Westernen  
Dennis Wetzel  
Logan Wetzel  
Weyerhaeuser  
Sean Whalen  
Kayla Whatley  
Jeremy Whichard  
Chelsey Whilding  
Dennis White  
Ana-Maria White  
Mark Whiting  
Breanna Whitmarsh  
Avery Whittington  
Katy Wicks  
Sidney Widmark  
Michael Wiggins  
Erica Wiley  
Alonda and Byron Williams  
Gina Williams  
Michelle Williams  
Paris Williams  
Tyler Williams  
Shellie Willis  
Candice Willmon  
Ron Wilson  
Travis Wilson  
Jessica Wilson-Miyake  
Berri Windsor  
Adam Winne  
Maria Winner

John Wirtala  
Dallas Witte  
Lucille and Victoria Wittren  
Coty Wolfe  
Rodney Wolfenbarger  
Sonya Wolfram  
Jacob Woll  
Thomas Wong  
Amanda Wong  
Mariel Wong  
Kathy Wood  
Jeannine Woodyear  
Nicholas Wright  
Kai Wright  
Valerie Wrynn  
Ellen Wu  
Xi Xie  
Zhonghui Xu  
Murat Yanar and Kim Boltz  
Beckie Yohn Ghazizadeh  
Ann Yoo  
Ron Youmans  
Lisa Young  
Laura Yurgalite  
Jiri Zacal  
Zahra Zahmatkesh  
Brian Zak  
Kendra Zapata  
Angelina Zega  
Helen Zeng  
Bret Zeorlin  
Frank Zequeira  
Alice Zhang  
Fan Zhang  
Alex Zhou  
Natalie Zier  
Joseph Zimmer  
Chris Zimney  
Ken Zinser  
Faraz Zorofchi  
Muhammad Zubair  
Tjaard Zwaagstra  
Mary Zwart


# INVEST IN YOUTH. EXPAND ACCESS. STRENGTHEN FUTURES.



## Stay connected with us.

[www.inspirebig.org/](http://www.inspirebig.org/)

 [www.instagram.com/bbbSPS/](https://www.instagram.com/bbbSPS/)

 [www.facebook.com/bbbSPS](https://www.facebook.com/bbbSPS)

 [www.linkedin.com/company/bbbSPS](https://www.linkedin.com/company/bbbSPS)

 [www.youtube.com/@BBBSPS](https://www.youtube.com/@BBBSPS)



SCAN ME